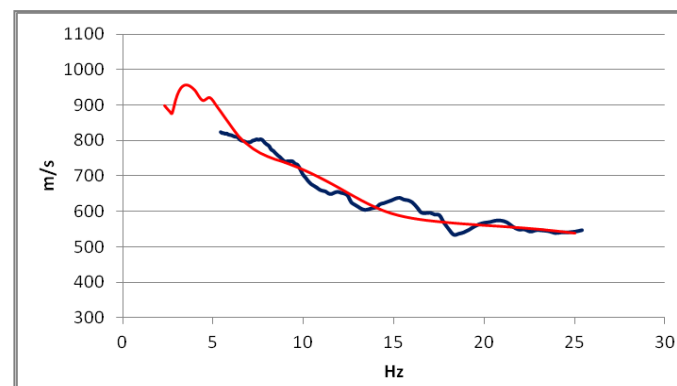
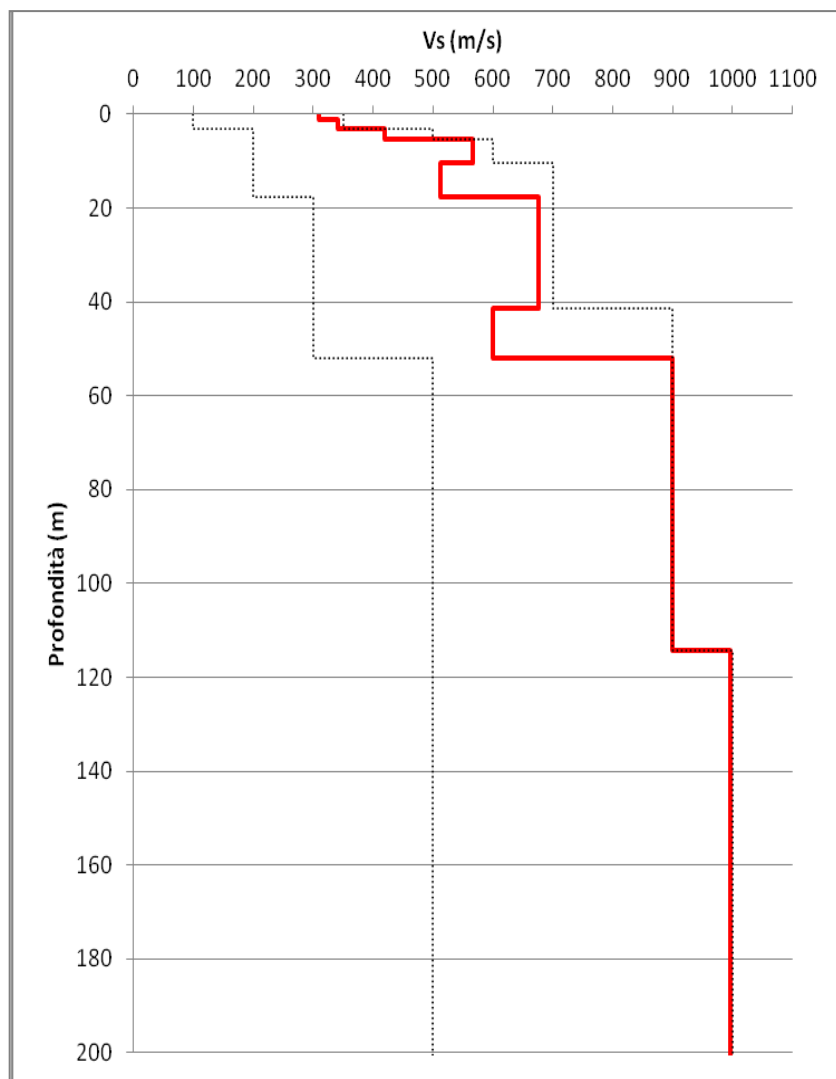
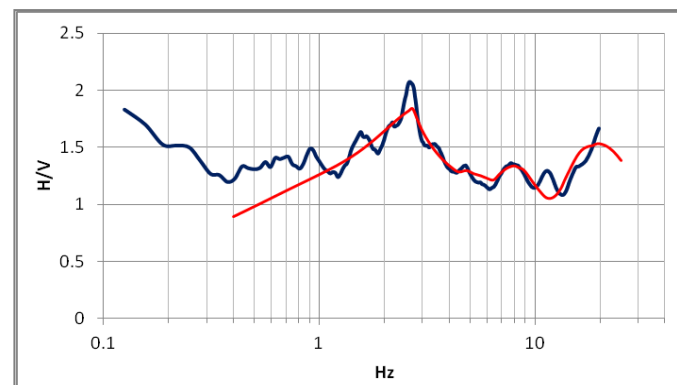


Profilo di Vs ESAC 2 Chiesanova



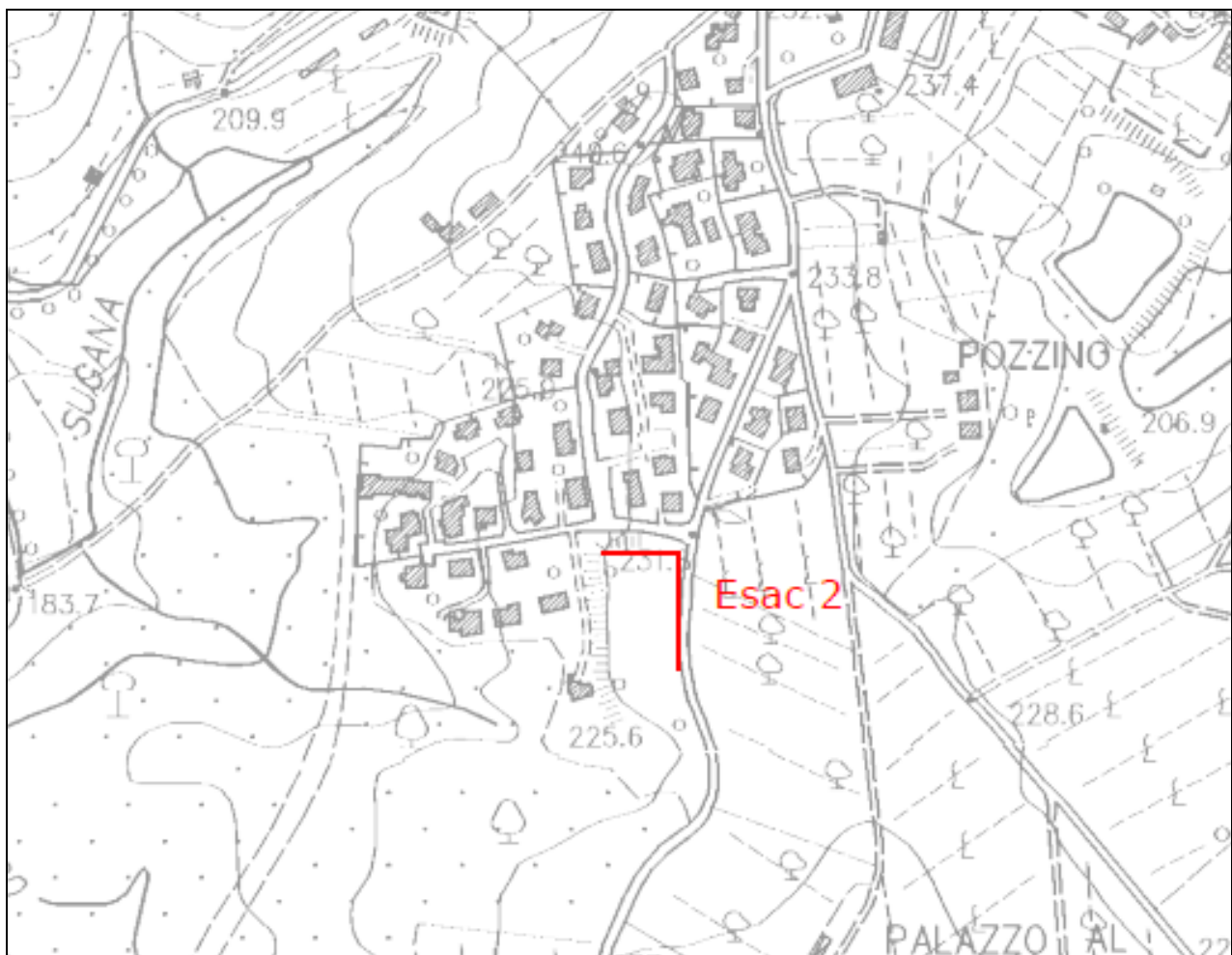
Match curva di dispersione
teorica /sperimentale
Array



Match curva di dispersione
teorica /sperimentale
HVSr

Modello monodimensionale Esac 2 Chiesanova

spessore (m)	Vp(m/s)	Vs(m/s)	ro(kg/m ³)	profondità	Vs medie
1.14	938.71	308.70	1830.89	0.00	308.70
1.93	1072.04	341.45	1242.42	1.14	328.49
2.16	1252.69	419.06	2829.91	3.07	360.67
5.22	1938.91	565.98	1295.21	5.23	440.56
7.17	2413.98	512.32	1748.78	10.45	467.18
23.84	2494.14	675.37	2251.22	17.62	567.85
10.63	2105.08	599.71	2998.05	41.46	574.07
62.31	1824.29	899.61	2623.17	52.08	715.00
112.32	1906.40	996.58	2602.64	114.39	831.38
0.00	2913.98	1282.99	1825.51	226.71	831.38



UBICAZIONE ESAC CHIESANOVA

scala 1:5000